

Note:

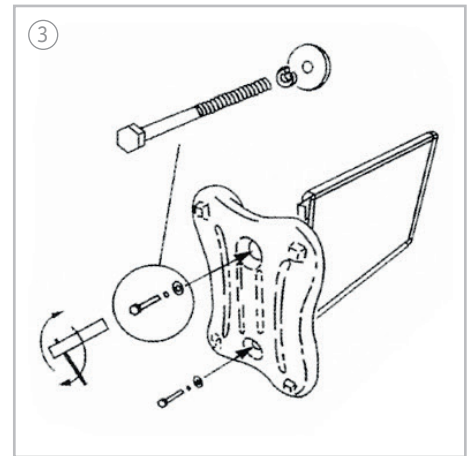
To avoid accidental loss of components, please dispose of the packaging only once the item is fully assembled.



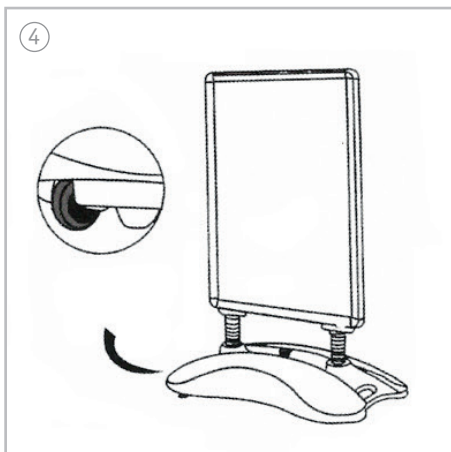
The package includes a base and a poster frame.



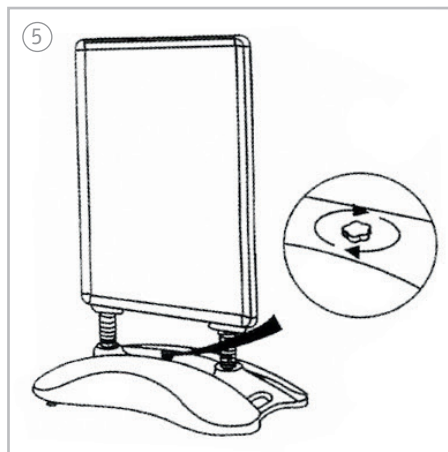
Insert the top part into the base.



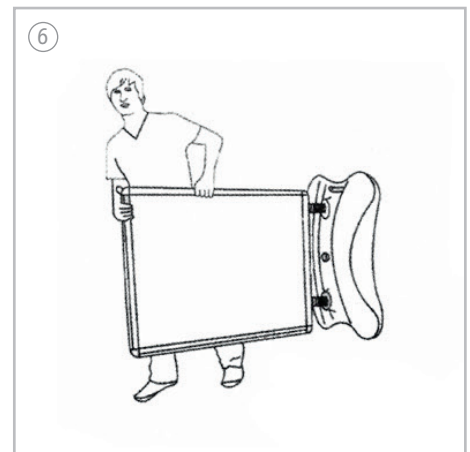
Place the WindSign sideways on the ground (see picture) and screw the poster frame to the plastic base.



Now you can insert your posters. To do this, open the 4 surrounding frame profiles and remove the cover film. Then replace the cover film and close the frame profiles.



Please fill the base with water or sand.



Tilt the WindSign onto the wheels to move it.

NOTE!

- Over-tightening the screws can lead to cracks in the water tank!
- To move the pavement sign in the assembled and filled state, tilt the WindSign and move it on the wheels (see Figure 6).
- Do not grasp the opened corners, but instead carry out the opening of the profiles with both hands as centrally and far from the corners as possible.
- Caution! The corners are sharp-edged.
- Place the WindSign always on a flat surface and do not move it over high steps or kerbs.

